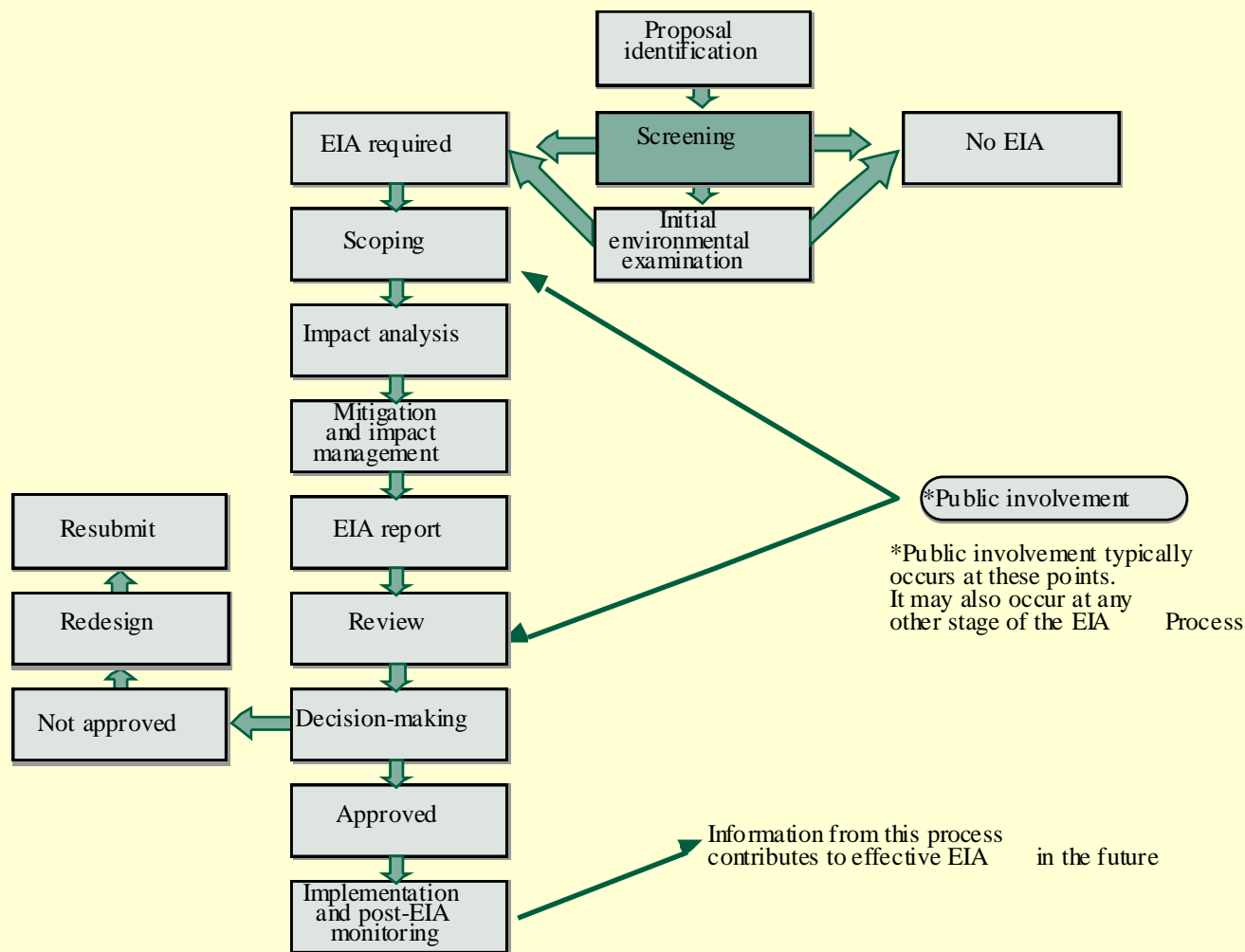




## EIA TRAINING RESOURCE MANUAL FOR SOUTH EASTERN EUROPE

### Screening







# What is screening?

- The screening process determines:
  - whether or not EIA is required for a particular project
  - what level of EIA is required



# Screening outcomes

- Full or comprehensive EIA required
- Limited EIA required
- No EIA required

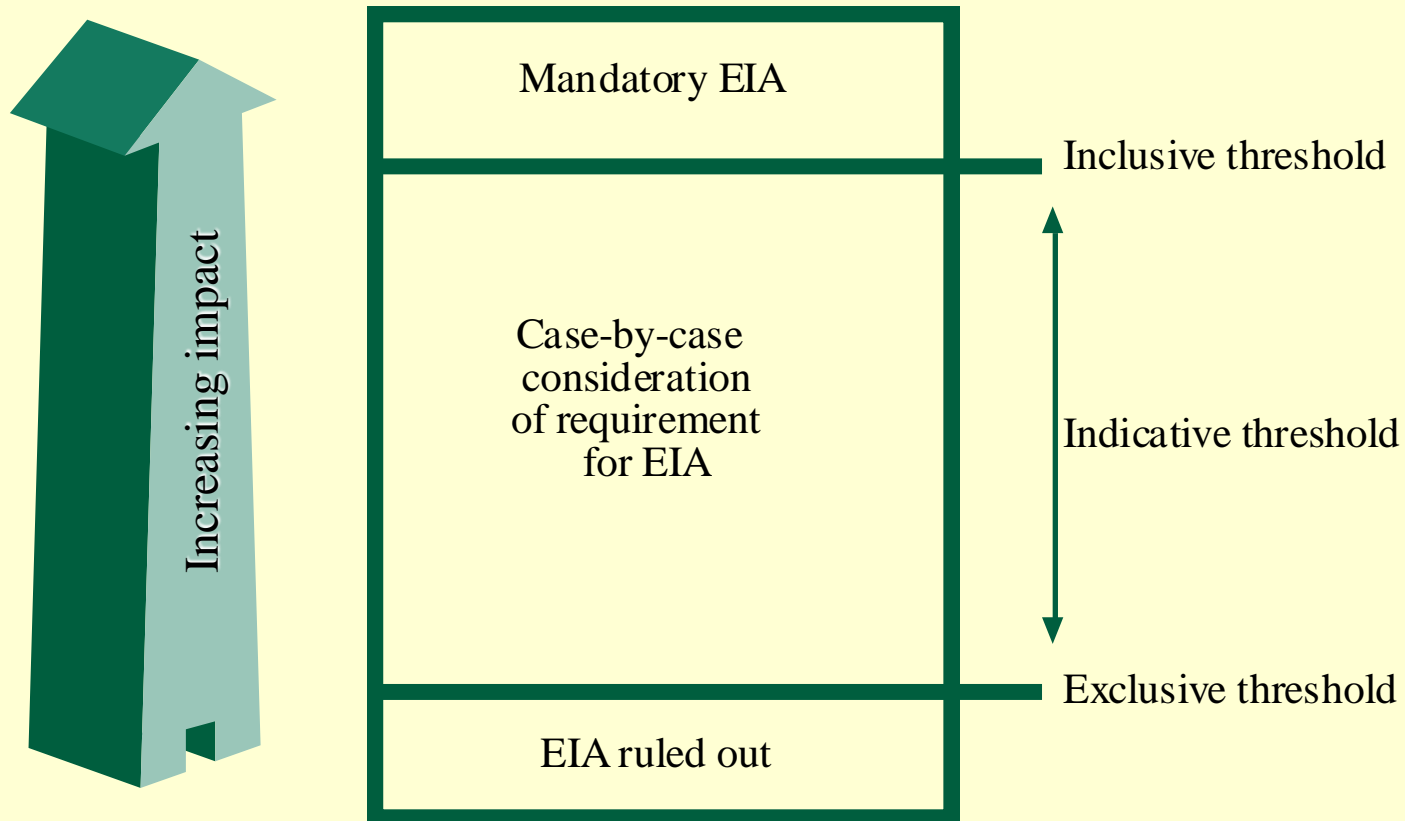


# Screening tools

- Project lists:
  - Inclusive — listed projects must undergo EIA
  - Exclusive — listed projects exempted from EIA
  
- Case-by-case examinations:
  - determine whether projects may have significant environmental effects
  - if so, project should undergo EIA
  
- Combination of above



# A framework for screening





# Screening in accordance with the EC EIA Directive

- **Mandatory application:** Annex I to the EC EIA Directive lists projects for which an EIA is always required.
- **Discretionary application:** Projects listed in Annex II require screening by case-by-case examination or by reference to thresholds criteria that are established by the member state. In doing so, the following criteria listed in Annex III need to be taken into account:
  - project characteristics;
  - project location; and
  - characteristics of potential environmental impacts.
- Screening results of Annex II projects must be made available to the public. (Art. 2.4)



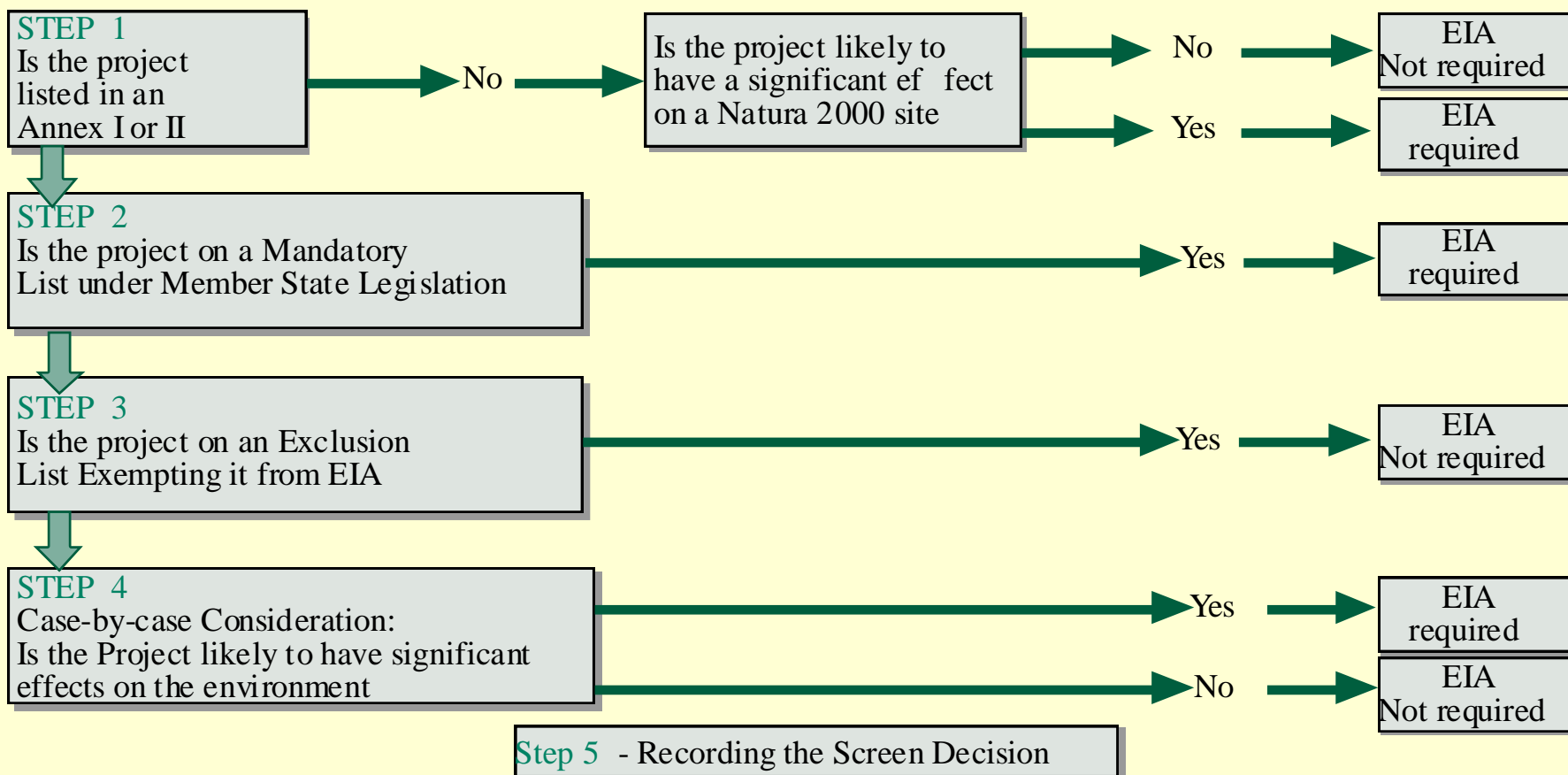
# 'Traffic Light' approach to screening (an example of applying the EC EIA Directive)

Inclusion or Mandatory Thresholds and Criteria	EIA is required	e.g. Annex I projects of Directive
Indicative or Guidance Thresholds and Criteria	Need for EIA must be considered	e.g. Annex II, except excluded ones, have to be screened against Annex III criteria
Exclusion Threshold Criteria	No EIA is required	e.g. Annex II projects that are not considered having significantly env . impacts + military developments excluded from EIA





# Screening in accordance with EC Guidance on Screening





# Screening in accordance with World Bank procedure

- All proposals submitted to the World Bank must undergo environmental screening.
  
- Environmental screening results for projects are classified into one of three EIA categories:
  - Category A proposals require full EIA
  - Category B proposals require partial EIA
  - Category C proposals do not require EIA



## Screening in accordance with EBRD procedure

- All proposals must undergo environmental screening to identify potential environmental risks and liabilities.
- As with the World Bank, all proposals are classified into one of three EIA categories (A,B, or C).
- Screening also determines if an Environmental Audit is required. If 'yes', the proposal is classified as Category 1, if 'no', it is classified as Category 0.



## Screening in accordance with the Espoo Convention

- All proposed activities listed in Appendix I to the Convention have to be screened for possibly significant, adverse transboundary impacts.
- General guidance for determining the significance adverse transboundary impacts is provided in Appendix III to the Convention.
- In addition, concerned parties may discuss whether other activities not listed in Appendix I to the Convention are likely to cause significant adverse transboundary impacts and are thus subject to transboundary EIA.



## Recommended elements for effective screening in SEE countries

- Mandatory application of EIA should be based on the list established in Annex I of the EC EIA Directive.
- Discretionary application of EIA should be based on the list established in Annex II of the EC Directive. For these projects, case-by-case screening should be applied, based on criteria defined in Annex III to the EC Directive. This will enable the fulfilment of EBRD and World Bank screening requirements.
- All projects that require EIA should be immediately screened for potential transboundary impacts, based on the criteria established in Appendix III to the Espoo Convention.