



Photo: Jacob Maentz

CREATING RESILIENT & LIVABLE CITIES

Pacific Cities Sustainability Initiative
Second Annual Forum

MARCH 11-13, 2014 | MANILA



Asia Society is the leading educational organization dedicated to promoting mutual understanding and strengthening partnerships among peoples, leaders, and institutions of Asia and the United States in a global context. Across the fields of arts, business, culture, education, and policy, the Society provides insight, generates ideas, and promotes collaboration to address present challenges and create a shared future. Founded in 1956 by John D. Rockefeller 3rd, Asia Society is a nonpartisan, nonprofit institution with headquarters in New York and centers in Hong Kong, Houston, Los Angeles, Manila, Sydney, Mumbai, San Francisco, Seoul, Shanghai, and Washington, DC.



The **Urban Land Institute** is a global nonprofit education and research institute supported by its members. Its mission is to provide leadership in the responsible use of land and in creating and sustaining thriving communities worldwide. Established in 1936, the Institute has nearly 30,000 members representing all aspects of land use and development disciplines, and has offices around the world including Washington, D.C., London, Hong Kong, and Frankfurt.

The Pacific Cities Sustainability Initiative (PCSI) is a collaborative dialogue which aims to foster long-term sharing of urban sustainability strategies between communities across the Pacific Rim. Launched in 2009 with the support of the USC Marshall School of Business and the UCLA Anderson School of Management, the initiative is a joint program of the Asia Society and the Urban Land Institute with support from leading organizations engaged in solving unprecedented challenges associated with rapid urbanization in Asia and across the Pacific Rim. PCSI convenes select thought leaders from business, government, and academia with the express aim of fostering new alliances, sharing innovative strategies, and showcasing effective practices.

For more information about the Pacific Cities Sustainability Initiative, please visit AsiaSociety.org/PCSI



#PCSI and #Manila2014

Asia Society Northern California

500 Washington Street, Suite 350

San Francisco, CA 94111

(415) 421-8707

AsiaSociety.org/Northern-California

The Urban Land Institute

1025 Thomas Jefferson Street, N.W., Suite 500 West

Washington, D.C. 20007

(202) 624-7000

ULI.org

Creating Resilient & Livable Cities

Forum Overview

The Pacific Cities Sustainability Initiative Second Annual Forum, “Creating Resilient and Livable Cities,” convenes an invitation-only group of urban sustainability experts from across the Philippines, North America, and Asia for a high-level dialogue to explore promising new approaches to creating cities that are both livable and resilient, in Manila and beyond. This year’s Forum looks at a number of critical issue areas, including governance and public sector preparedness, resilient infrastructure, community networks, civic participation, public-private partnerships, long-range planning, and housing and access.



The Forum provides a platform for an action-oriented exchange of best practices and lessons learned. We have brought together a wide range of government representatives and global experts from urban planning, civil society, the private sector, and academia. Through keynotes, panels, and interactive, problem-solving workshops, participants will help to identify what works, and what does not, in creating cities that are more livable and more resilient.

Thank you for joining us in Manila for this year’s PCSI Forum and for helping us strengthen networks for urban sustainability across the Asia-Pacific.



Pacific Cities Sustainability Initiative Second Annual Forum

Creating Resilient & Livable Cities | March 11-13, 2014 | Manila

TUESDAY, MARCH 11

All Day MOBILE WORKSHOPS

Makati Central Business District & Bonifacio Global City Tour: Urban Mobility, Water Management, and Open Space

Manila and Pasay City Tour: Historical and New Disaster Resilient Architecture

6:00 PM OPENING RECEPTION AND PUBLIC EVENT

Venue: Rigodon Ballroom, The Peninsula Hotel Manila, Makati City

“Disaster Recovery and The Resilient Cities of Tomorrow”

Moderator:

Tom Nagorski, Executive Vice President, Asia Society

Event Master of Ceremonies:

Richard Drobnick, Director, Center for International Business Education and Research,
University of Southern California Marshall School of Business

Speakers:

Secretary Panfilo Lacson, Presidential Assistant for Rehabilitation and Recovery,
Philippines

Dr. Kuntoro Mangkusubroto, Presidential Delivery Unit for Development Monitoring
and Oversight, Indonesia

Sir Robert “Bob” Parker, Former Mayor, City of Christchurch, New Zealand

WEDNESDAY MARCH 12

8:00 AM DOORS OPEN

Venue: The Mind Museum, J. Y. Campos Park, 3rd Avenue, Bonifacio Global City, Taguig

Registration and networking

Forum Master of Ceremonies:

Eric Manuel, Director, Philippines Capital Markets, Research & Consultancy, Cushman and Wakefield, Philippines

8:30 AM WELCOMING REMARKS

Venue: The Mind Museum Auditorium

Welcoming remarks,

Doris Magsaysay Ho, Chair, Asia Society Philippines Foundation

Carlos S. Rufino, Chair, Urban Land Institute Philippines

Forum Overview:

Bruce Pickering, Vice President, Global Programs and Executive Director,
Northern California, Asia Society

8:45 AM WHY RESILIENCY MATTERS FOR CITIES

Venue: The Mind Museum Auditorium

What is the Philippines experience with preparing for disasters and extreme weather events? Why does it matter?

Moderator:

Francis Estrada, Independent Public Company Director & Vice-Chairman,
Institute of Corporate Directors

Speakers:

Danny Antonio, Office of the Presidential Assistant for Rehabilitation & Recovery

Christopher “Sheen” Gonzales, Mayor of Guiuan

Rene Meily, President, Philippine Disaster Recovery Foundation

9:30 AM

Good governance, long-term planning, and sustainable housing are all linked. Preparing for the impacts of climate change, extreme weather, and massive urbanization is a challenge for cities across the Asia Pacific. How can governments work to make their cities or regions more resilient and sustainable and what are examples from cities outside the Philippines?

Speakers:

Sir Robert “Bob” Parker, Former Mayor, City of Christchurch, New Zealand

Pablo Schuster, Executive Director, Desafio Levantemos Chile (Challenge Rebuild Chile)

10:00 AM INTERACTIVE Q&A SESSION

Moderator:

Brandon Sedloff, Senior Vice President, Global Corporate Development
Urban Land Institute

10:30 AM COFFEE BREAK
Venue: The Mind Museum Exhibition Hall

11:00 AM GOOD GOVERNANCE, PREPAREDNESS AND INTEGRATED RESPONSE
Venue: The Mind Museum Auditorium

Public sector preparedness and developing common goals are important to city planning and management. Good governance and integrated response is critical in an age of climate uncertainty. How can governments and the public sector become more flexible and responsive? How do civic participation, transparency, and accountability play into this? What do the experiences of other cities and regions tell us?

Moderator:

Kathleen Carey, Executive Vice President, ULI

Speaker:

Guillermo “Bill” Luz, Private Sector Co-Chairman, National Competitiveness Council

Gloria Steele, Mission Director, USAID Philippines

Antonio la Viña, Dean of the Ateneo School of Government

12:15 PM LUNCH
Venue: The Mind Museum Exhibition Hall

1:15 PM Move to breakout sessions

PART I: RESILIENT INFRASTRUCTURE, RESILIENT CITIES

1:30 - 3:00 PM Concurrent Workshops – Choose One
Venue: Mind Pods, Auditorium and Mind Museum Exhibition Hall

Session 1: Urban Mobility—Efficient, multimodal transit and walkable, bikeable communities create healthy, livable places and reduce energy consumption, GHG emissions, and traffic problems. This session will address one of the most important challenges faced by today’s growing cities in Asia and North America, including Manila. How can Asia-Pacific cities prioritize mass transit over individual car ownership to help to mitigate GHG emissions? How can cities minimize disruptions to urban mobility as a whole after disasters?

Moderator:

Rives Taylor, Principal, Gensler

Discussants:

Meng Fei, Sustainable Cities Program Officer, Energy Foundation

Rene Limcaoco, Undersecretary for the Department of Transportation & Communication, Philippines

Session 2: Resiliency and Investment Strategy: How to Evaluate Cities? City resilience is a key concern for long term investors in the urban environment. It is also a concern for individual cities seeking to remain competitive, attract capital, and provide a decent living and working environment for their populations. How do you go about evaluating a city's resilience as an investor entering a market or compare a number of markets with different characteristics? How is creating sustainable, resilient and livable cities becoming part of investment strategies?

Moderator:

Kate Brown, Group Director-Sustainability, Grosvenor

Discussants:

Peter Succoso, Managing Director, Apollo

Thomas Miller, Regional Director of Development, LaSalle Asia Pacific

Session 3: Qualities of Resilient Infrastructure—Disaster-resistant transit infrastructure, storm water management, and storm shelters are essential components in city planning. What is resilient infrastructure and what are some of the leading examples in Asia and North America as well as in the host city, Manila? What are key qualities that make infrastructure resilient? Are there examples that improve city resiliency and livability at the same time?

Moderator:

Ashok Raiji, Principal, Chair Americas Property Executive, ARUP

Discussants:

Dato Lim Chow Hock, Director at River Basin and Coastal Zone Management

Division, Department of Irrigation and Drainage, Ministry of Natural Resources and Environment, Malaysia

Felino “Jun” Palafox, Jr., Principal Architect and Urban Planning, Palafox & Associates

Session 4: Public-Private Partnerships—How can public-private partnerships be harnessed to create resilient infrastructure in cities? Can the private sector help cities such as Manila access capital, technology, or expertise to improve resiliency and encourage development in a way that also helps them mitigate their own risks in a win-win scenario?

Moderator:

Robert Spich, Senior Lecturer, University of California-Los Angeles,
Anderson School of Management

Discussants:

Cosette Canilao, Executive Director, Public-Private Partnership Center, Philippines

Jim O’Gara, Director, Deloitte Transactions and Business Analytics, LLP

3:00 PM

COFFEE BREAK

Venue: The Mind Museum Exhibition Hall

3:30 PM WORKSHOP OUTCOMES

Venue: Mind Museum Exhibition Hall
Presented by breakout session moderators

4:15 PM INTEGRATED PLANNING FOR RESILIENT & LIVABLE CITIES

Venue: The Mind Museum Exhibition Hall

Resilient infrastructure is critical, but if it is built outside the context of a sustainable long-range urban plan, it can fail to provide citizens with a healthy and productive place to live. Community integration is also critical for public-private partnerships to succeed. Resiliency and livability are ultimately two sides of the same coin and without addressing both, a city cannot truly become sustainable.

Moderator:

Uwe Brandes, Executive Director, Masters of Professional Studies in Urban and Regional Planning, Georgetown University

Speakers:

Arnel Casanova, President & CEO, Bases Conversion Development Authority

Roy Brockman, Technical Director ICF/GHK, and Director, ICF/GHK Hong Kong

Sean Chiao, Chief Executive, Buildings + Places, APAC at AECOM

David Nieh, Head of China, LendLease, (invited)

Rogelio Singson, Secretary of Public Works and Highways (invited)

5:45 PM FORUM RECEPTION AND DINNER

Venue: Malacañan Palace

Buses leave from Mind Museum immediately upon closing of Forum

Dinner Hosted by the Hon. Paquito N. Ochoa Jr., Executive Secretary of the Philippines, and Chairperson, APEC 2015, National Organizing Committee

THURSDAY MARCH 13

8:00 AM DOORS OPEN

Venue: The Mind Museum, J. Y. Campos Park, 3rd Avenue, Bonifacio Global City, Taguig

Registration and networking

8:30 AM OPENING REMARKS

John Fitzgerald, Chief Executive, Asia Pacific, Urban Land Institute

8:45 AM CITIES IN THE AGE OF CLIMATE CHANGE

Venue: Mind Museum Exhibition Hall

Today's Pacific cities must address both resiliency and livability to compete globally and become more sustainable. As more people move into cities increased energy consumption and GHG emissions threaten the environment. How can cities mitigate rather than contribute to climate change? What are ways in which cities can improve their resiliency while enhancing livability for citizens in an age of global climate change?

Moderator:

Jose Ma. Lorenzo Tan, President & CEO, World Wildlife Fund

Speakers:

Jim Maguire, Regional Managing Director - Construction,
Power & Infrastructure, Asia, AON

Rodel Lasco, Scientific Director, OML Center & Scientist,
Intergovernmental Panel on Climate Change (IPCC)

Don H. Lee, President, Lafarge Cement Services (Philippines), Inc.

Mary Ann Lucille Sering, Commissioner & Executive Director,
Climate Change Commission

10:00 AM BREAK

PART II: LIVING IN THE RESILIENT CITY

Venue: Mind Museum Exhibition Hall

10:15 AM VULNERABILITY IN THE RESILIENT CITY: HOUSING AND COMMUNITY NETWORKS

Pacific Cities share common challenges, not least their geographic vulnerability to the impacts of severe weather events and environmental degradation. In dense urban areas across the Asia-Pacific region, the poorest urban citizens are the most vulnerable to the impacts of climate change, flooding, and other disasters. How can the resilient qualities of informal communities – such as strong networks and resourcefulness – be harnessed while upgrading living conditions?

How are the most vulnerable areas and residents of urban areas addressing this challenge and working toward becoming more resilient and livable? More specifically, how are technology, the sharing economy, and civic participation are changing cities and leading to stronger community networks and more resilient futures?

Moderator:

Robert Freitag, Director of the Institute for Hazards Mitigation Planning and Research,
University of Washington

Discussant 1:

Antonio Meloto, Founder & Chairman, Gawad Kalinga

Response Panelist 1 :

Patrick Condon, Chair, Urban Design, and Professor, Landscape Architecture, School of Architecture and Landscape Architecture, University of British Columbia

Discussant 2:

Illac Diaz, Founder, My Shelter/Litre of Light

Response Panelist 2:

Celina Agaton, Google USAID ICCM Fellow, Cross Sector Crisis Mapping

11:30 AM LIVABILITY IN THE RESILIENT CITY: PLANNING CITIES FOR PEOPLE

Cities that are built or managed in the absence of long-term, people-oriented planning are more vulnerable to the impacts of disaster, are less pleasant places to live and work, and are more risky for investors and developers. What does a livable, people-oriented city look like? How has integrative, people-oriented planning been promoted in Pacific cities and what have been the obstacles?

Moderator:

Sujata Govada, Managing Director at Urban Design & Planning Consultants Ltd.

Discussant 1:

Jeffrey Heller, President, Heller Manus Architects

Response Panelist 2:

Nathaniel (Dinky) Von Einsiedel, President, Alliance for Safe & Sustainable Reconstruction (ASSURE)

Discussant 2:

Art Corpuz, Senior VP and Head of Urban, Regional Planning and Land Acquisition, Ayala Land

12:45 PM CLOSING REMARKS

1:00 PM FORUM CLOSING LUNCH

Venue: The Mind Museum Exhibition Hall

Forum Speakers and Participants

Forum Speakers are designated with an asterisk “*”

Mylene Abiva	President	Felta
Agbayani, Jamie	President & CEO	John Hay Management Corp.
Celina Agaton*	Google USAID ICCM Fellow	Cross Sector Crisis Mapping
Sabrina Aguado	Programs Intern	Asia Society
Jhopee A. Agustin	Assistant City Administrator for Operations	City of Davao
Ardieli A. Ambrosio	Engineer	City of Roxas
Danilo Antonio	Secretary	Office of the Presidential Assistant for Rehabilitation and Recovery
Zorayda Amelia Alonzo	Director	Bases Conversion and Development Authority
Jezreel G. Apelar	Coordinator	Urban Land Institute Philippines
Antonino Aquino	President	Ayala Land Inc.
Jorge Araneta	Chair & President	Araneta Group
Alfredo Austria	President	DMCI Project Developers, Inc.
Paul Azam	ASPF Intern	Asia Society
Michelle Baena Ciriacruz	VP and Head of Corporate Communications	ITPI Corp. (Italpinas)
Lauro Baja III	Managing Director	UBS Investments Inc.
David Balanque	President	Makati Commercial Estate Association
Sara Barron	Student	University of British Columbia
Evangeline Bautista	Dean	Ateneo de Manila University
Joseph Ryan Bawa	Design & Engineering Head	Monolith Construction and Development Corporation
Vanessa Bergqvist	Vice President	Credit Suisse
Mark Blackwell	Principal + Regional Director	AECOM Buildings + Places
Manuel Blas III	Head of Commercial Operations	Fort Bonifacio Development Corporation
Uwe S. Brandes*	Associate Dean and Executive Director	Georgetown University Urban Planning Program
Peter Brannan	Managing Director - Asia & Middle East	Arquitectonica
Royston Brockman	Technical Director	ICF-GHK
Kate Brown*	Group Director of Sustainability	Grosvenor
Raul Buensalida	Marketing Officer	Bases and Conversion Development Authority
Jessie Cabaluna	Head of Market Circle 1	SGV, member firm of Ernst & Young Global Ltd.
Edd Cabardo	Director, Enterprise, Commercial and Public Sector	CISCO Systems
Lauro Zyan Caina	Creative Strategist, Writer	City of Valenzuela
Mary Jean Caleda	Associate Dean for Research	Ateneo School of Government
Gina Campos	General Manager	Delta Airlines
Jeffrey D.Y. Campos	President and Chairman	Greenfield Development Corporation
Joselito D. Campos	Chairman	Fort Bonifacio
Cosette Canilao*	Executive Director	Public-Private Partnership Center, Philippines
Jocelyn Capal	Administrator	Urban Land Institute Philippines
Kathryn Cardenas	Global Leadership Initiatives	Asia Society
Arnel Casanova*	President & CEO	Bases Conversion Development Authority
Chrissy Casas	Coordinator	Urban Land Institute Philippines

Ricardo Castro	Partner	Quisumbing Torres/Baker McKenzie
Evelyn Cayat	Planning Officer	City of Baguio
Angel Alan B. Celino	Mayor	City of Roxas
Chia-Lung Chang	SE Region Planning and Urban Design Leader	Gensler
Sean Chiao*	Chief Executive, Buildings + Places, APAC	AECOM
Jay Chua	Associate Director	UBS Investments Philippines
Edward Codilla	Mayor	Ormoc, Leyte
Elmer Codilla	Mayor	Kananga, Leyte
Aloysius Colayco	Chairman	Lafarge Republic, Inc.
Lorenzo Comandante	Senior Admin. Assistant III	Climate Change Commission
Patrick Condon*	Chair, Urban Design, and Professor, Landscape Architecture	School of Architecture and Landscape Architecture, University of British Columbia
Max Connop	Member of the Board	Aedas International Limited
Isidro A. Consunji	Chairman	DMCI Project Developers, Inc.
Art Corpuz*	Senior VP & Head of Urban, Regional Planning & Land Acquisition	Ayala Land
William Coscolluela	Vice President	Makati Commercial Estate Association
Arnel Costa	Principal	RTKL International, Inc.
Bruce Crumley	CEO & President	Hawk Enterprises
J. Carlitos G. Cruz	Vice Chairman and Deputy Managing Partner	SGV, member firm of Ernst & Young Global Ltd.
Catherine Cuba	Auditor	OMLL & Co.
Assunta Cuyegkeng	Director	Ateneo de Manila University, Institute of Sustainability
Mark Roeland de Castro	Architect/Environmental Planner	ASSURE
Michael de Castro	Operations Manager	Palafox Associates
Marissa de Guzman	Business Development	CH2M HILL
Eduardo de Mesa	Director	Bases Conversion and Development Authority
Angela de Villa-Lacson	President and CEO	Arthaland Corporation
Christopher Dela Cruz	Chief Executive Officer	Philippine Green Building Council
Yongheng Deng	Provost's Chair Professor and Director	National University of Singapore
Joel Deocarís	Architect	Deocarís Design Studio
Ofelia A. Despalo	City Planning and Development Coordinator	City of Zamboanga
Illac Diaz*	Founder	My Shelter/Liter of Light
Crispin Emmanuel Diaz	Associate Professor	School of Urban and Regional Planning, University of the Philippines
Cecilia Drilon	Senior Correspondent	ABS CBN Corporation
Richard Drobnick*	Director	Center for International Business, USC Marshall School of Business
George Drysdale	Chairman and CEO	Marsman Drysdale Group
Pedro Godiardo Ebcas	Councilor	City of Ormoc, Leyte
David Edwards	Managing Director	Rose Rock Group
Ame Engelhart	Hong Kong Director	Skidmore, Owins & Merrill LLP
Michael Enriquez	Chief Investment Officer	SunLife of Canada, Philippines
Eileen C. Escobar-San Juan	Local Economic and Investment Promotions Officer	City of Cagayan de Oro, Misamis Oriental
Mary Ann Espina	Dean	University of Philippines College of Architecture
Omar Maxwell Espina	Dean	University of San Carlos College of Architecture & Fine Arts

Francis Estrada*	Independent Public Company Director & Vice Chairman	Institute of Corporate Directors
Ruth Equipaje	Planner	ASSURE
Rodel S. Falcasantos	City Architect	City of Zamboanga
David Faulkner	Executive Director	Colliers International
Meng Fei*	Sustainable Cities Program Officer	Energy Foundation
Bayani Fernando	Former Mayor and Chair	Marikina City, Metro Manila Development Authority
John Fitzgerald*	Chief Executive, Asia Pacific	Urban Land Institute
Allen Folks	Vice President	AECOM
Stephen Fong	Senior Vice President	Rose Rock Group
Rosanna Fores	Former Barangay Chairperson	Barangay Forbes Park, Makati City
Robert Freitag*	Director of Hazards Institute and Senior Lecturer	University of Washington
Lira Furster	Legal Associate	Ateneo de Manila University
Sinead Gangler	Pursuit Manager	Deloitte
Rex Gatchalian	Mayor	City of Valenzuela
Florante Gerdan	President and CEO	Poropoint Management Corporation
Ma. Aurora Geotina-Garcia	Director	Bases Conversion Development Authority
Ryan Gever	Masters Degree Candidate	Georgetown University
Frederick Go	Chairman	Robinsons Land Corporation
Ferdinand Golez	Director	Bases Conversion and Development Authority
Jose Edgardo Gomez	Assistant Professor / Environmental Planner	University of the Philippines
Elmar Gomez	Director	Bases Conversion and Development Authority
Anna Gonzales	Sustainability Manager	Ayala Land Inc
Christopher Sheen Gonzales*	Mayor	Municipality of Guiuan
Hannah Gonzales	Planner	ASSURE
Jay Gonzalez	Professor	Golden Gate University
Rolando Gosiengfiao	Director	Bases Conversion and Development Authority
Sujata Govada*	Founding & Managing Director	UDP International
Miguel Guerrero	Chairman	Green Architecture Advocacy Philippines
Steven Hamilton	Manager	Deloitte
Jeffrey Heller*	President	Heller Manus Architects
Dato Lim Chow Hock*	Director at River Basin and Coastal Zone Management Division, Department of Irrigation and Drainage	Ministry of Natural Resources and Environment, Malaysia
Catherine Ilagan	EVP	Filinvest Alabang Inc
Fernando Imperial	President	Concrete Masters, Inc
Joseph Jackiewicz	MBA Candidate	USC Marshall School of Business
Jay Anthony S. Javellana	Field Sales Manager	Pag-Asa Steel Works, Inc.
Roberto Javier	National Sales Director	Cemex Strategic Philippines, Inc.
Karen Jimeno	Director for Communications and External Affairs	PARR
Ankit Joshi	Manager - Applied Projects Group	Earth Observatory of Singapore
Roberto Carmona Julian	Consultant	CH2M HILL
Mike Keppler	Consultant	Pacific Plaza
Phil Kim	Managing Director Asia	The Jerde Partnership
Eli Konvitz	Planning Director, South East Asia	Atkins
Kang Mo Koo	Research Student	National University of Singapore

Arianna Koudounas	Master's in Urban and Regional Planning Candidate	Georgetown University
Antonio la Viña*	Dean	Ateneo School of Government
Angela Lacson	President and CEO	Arthaland
Panfilo Lacson*	Secretary	PARR
Kate Landry	Partnership Development and Reporting Manager	Build Change
Rodel Lasco*	Scientific Director	OML Center
Bonar Laureto	Executive Director	Philippine Business for the Environment (PBE)
Olivia Lauron	Planner	ASSURE
Melissa Lavente	Policy Officer	OPAEP
Don H. Lee*	President	Lafarge Cement Services
David Leechiu	Country Head	Jones Lang LaSalle Philippines
Jorge Leon	PhD candidate	University of Melbourne
Jojo Leviste	President	ITPI Corp. (Italpinas)
Rene Limcaoco*	Undersecretary for Planning	Department of Transportation and Communication
Manolito Limlengco	Sales Manager	Pag-Asa Steel Works, Inc.
Jerick Limoanco	Executive Assistant	Gawad Kalinga
Jiang Lin	Senior Vice President	Energy Foundation
Michael D. Litang	Architect	City of Surigao
Suyin Liu Lee	Executive Director	Asia Society Philippines
Jose Eduardo Llanes	Sustainability Officer	SM Supermalls
Rafael Llave	General Manager	BCDA Management & Holdings, Inc.
Shiela Lobien	Head of Agency, Leasing/Landlord Representation	Jones Lang LaSalle
Federico R. Lopez	Chairman and CEO	Oscar M. Lopez Center & Energy Development Corporation
Cecille Lorenzana-Romero	Coordinator	Urban Land Institute Philippines
Guillermo Luz*	Co-Chairman for the Private Sector	National Competitiveness Council
Jed Patrick E. Mabilog	Mayor	City of Iloilo
Federico Macaranas	Professor	Asian Institute of Management
Marge Madrigal	Program Officer	Asia Society Philippines
Tristan Magbanua	Senior Manager - Industry Team, A/P	BASF East Asia Regional HQ Ltd.
Doris Magsaysay-Ho*	Chair	Asia Society Philippines
James Maguire*	Regional Managing Director, Asia	Aon Risk Solutions
Mariza Mandocdoc	VP Business Development and Marketing	Clark Development Corporation
Kuntoro Mangkusubroto*	Presidential Delivery Unit for Development	Indonesia
Rizalina G. Mantaring	President and CEO	SunLife of Canada, Philippines
Eric Manuel*	Director	Cushman and Wakefield Philippines
Raul S. Martinez	President and CEO	Nuvoland Philippines, Inc.
Leon Mayo	Planner	ASSURE
Jun Medina	Village Manager	Forbes Park Association
Rene Meily*	President	Philippine Disaster Recovery Foundation
Antonio Meloto	Chairman	Gawad Kalinga
Martin Earl Mendoza	Project Supervisor	Monolith Construction and Development Corporation
Alexie Mercado	Field Representative	Give2Asia
Thomas Miller*	Regional Director of Development	LaSalle Asia Pacific

John H. Miller	Vice President Design & Construction Asia Pacific	MGM Hospitality
Richard Mills	Chairman	Chalre Associates
Kathlyn Misajon	ASPF Intern	Asia Society Philippines
Oscar S. Moreno	Mayor	City of Cagayan de Oro, Misamis Oriental
Merlinda Morin	City Engineer	City of Butuan, Agusan del Norte
Racquel Naciongayo	City Environment and Natural Resource Officer	City of Pasig
Kurt Nagle	Principal	RTKL Associates Inc.
Thomas Nagorski*	Executive Vice President	Asia Society
Anand Nandakumar	Director	Monitor Deloitte Southeast Asia
Romolo Nati	CEO	ITPI Corp. (Italpinas)
Jerry Navarrete	CFO	Vista Land
Greg Navarro	President	Management Association of the Philippines
Bienvenido Nebres	Professor	Ateneo de Manila University
David Nieh*	Head of China	LendLease
Marivic J. Nierras	Engineer	City of Subic
Cirilo P. Noel	Chairman and Managing Partner	SGV, member firm of Ernst & Young Global Ltd.
Marvin Norona	Professor	Mapua Institute of Technology
Jim O’Gara*	Director	Deloitte
Eduardo Olbes	President	SB Capital Investment Corporation
Pauline Oh	Senior Vice President, Asia Pacific	Urban Land Institute
Luis Oquinena	Executive Director	Gawad Kalinga
Karima Palafox	Partner & Senior Urban Planner	Palafox Associates
Felino Palafox Jr.*	Principal Architect & Urban Planner	Palafox Associates
Pedro Palomino	Cemex Strategic Philippines, Inc.	President and CEO
Edgardo D. Pamintuan	Mayor	City of Angeles
Rhinnon Pamintuan	ASPF Intern	Asia Society Philippines Foundation
Sir Robert Parker*	Former Mayor	City of Christchurch, New Zealand
Daniel Parkes	General Manager	Hongkong Land
Alfredo Pascual	President	University of the Philippines
Emily Peckenham	Sustainability Program Manager	Asia Society
Bjarne Pedersen	Executive Director	Clean Air Asia
Ramon Peralta	City Planning and Development Coordinator	City of San Fernando
Pauline C. Perez	Architect	City of Baybay, Leyte
N. Bruce Pickering*	Vice President Global Programs-Executive Director, Northern California	Asia Society
Gregory Pierce	Doctoral Candidate	University of California, Los Angeles
Patrick Postrero	City Planner	City of Baybay
Marixi Prieto	Board Chair	Philippine Daily Inquirer
Anna Ma. Carmen Principe	City Planner	City of Bacolod
David Pringle	Managing Partner	10 Design
Monico O. Puentevella	Mayor	City of Bacolod
Sean Quinn	Head of Sustainable Design	10 Design
Showar Raagas	Planning Manager	Ayala Land Inc.
M. Mizanur Rahman	Post Graduate Fellow	Asian Institute of Management
Ashok Raiji*	Principal, Chair Americas Property Executive	Arup

Michael L. Rama	Mayor	City of Cebu
Elmer Ramoneda	City Engineer	City of Angeles
Edgar Reformado	Architect	ASSURE
Prescilla Krishna Remata	Executive Assistant	Asia Society Philippine Foundation, Inc
Felix Resurrecion	Architect	FPR Designs
Lourdes R. Reyes	CFO	Fort Bonifacio Development Corporation
Noel Rivera	Director of Tourism	City of Pasig
Rex Robielos	Dean	Mapua Institute of Technology
Jenny Rockett	Program Officer	Asia Society Philippines
Alfred Romualdez	Mayor	City of Tacloban, Leyte
Martin Romualdez	Congressman	1st District of Leyte
Noel E. Rosal	Mayor	City of Legazpi, Albay
Raymond D. Rufino	Executive Vice President	The Net Group
Carlos S. Rufino*	President	The Net Group & Chairman, ULI Philippines
Serafin Salvador Jr.	Director	Bases Conversion and Development Authority
Tina Samson	Executive Vice President & Legal Counsel	The Net Group
Pebbles Sanchez	Planning Officer III	Climate Change Commission
Daphne Sanchez	AVP	Filinvest Alabang Inc
Perry Sanga	Professor/Architect	Mapua Institute of Technology
Asteya Santiago	Former Dean	School of Urban and Regional Planning, University of the Philippines Diliman
Maria Scarzella Thorpe	Program Associate	Asia Society
Andreas Schaffer	Director - Applied Projects Group	Earth Observatory of Singapore
Pablo Schuster	Executive Director	Desafo Levantemos Chile
Brandon Sedloff*	Senior Vice President, Global Corporate Development	Urban Land Institute
Justin Charles See	Graduate Research Assistant	Ateneo de Manila University/ Manila Observatory
Mary Ann Lucille Sering*	Executive Director & Commissioner	Climate Change Commission
Violeta Seva	Senior Adviser	City of Makati
Ariel Shtarkman	Founder	Orca Capital Ltd
Hans Sicat	President and CEO	Philippine Stock Exchange
Raymond Sih	Architect, Urban Designer	ASSURE
Liza Silerio	Vice President	SM Supermalls
Shirley Silva	Planning Manager	Ayala Land
Liliana Silva	Marketing Director, Asia	The Jerde Partnership
Rogelio Singson*	Secretary	Department of Public Works and Highways
Ramola Singru	Sr. Urban Development Specialist	Asian Development Bank
Wendy Soone-Broder	Director of Global Corporate Development & Strategy	Asia Society
Robert Spich*	Senior Lecturer	UCLA Anderson School of Business
Gloria Steele*	Mission Director	USAID Philippines
Peter Succoso*	Managing Director	Apollo
Hans T. Sy	President	SM Prime Holdings Inc
Anna Sy-Lawrence	Managing Director	C/S Design Consultancy
Jose Ma. Lorenzo Tan*	President & CEO	World Wildlife Fund
Eusebio Tan	Managing Partner	ACCRA Law

Kevin L. Tan	First Vice President	Megaworld Corporation
Vincent Tan	Executive VP	Ayala Land, Inc.
Thomas Tang	Sustainability Director	AECOM
Rives Taylor*	Principal	Gensler
Gloria Teodoro	Dean	Mapua Institute of Technology
Marnie Tolosa	Director, Strategic Business Development	CISCO Systems
Joanne Tong	Business Development Manager	Pag-Asa Steel Works, Inc.
Kathryn Tong	Assistant to the Treasurer	Pag-Asa Steel Works, Inc.
Maximillian Tong	Special Assistant to the President	Pag-Asa Steel Works, Inc.
Wellington Tong	President	Pag-Asa Steel Works, Inc.
Steven Townsend	Regional Director of Planning and Urban Design	Gensler
Christopher Tremewan	Secretary General	Assn of Pacific Rim Universities
Arturo Tugade	President and CEO	Clark Development Corporation
Don Ubaldo	AVP	Filinvest Alabang Inc
Fred Uytensu	President and CEO	Alaska Milk Corporation
Constant Van Aerschot	Executive Director	Business Council for Sustainable Development Singapore
Jan van Heeswijck	Consultant	Pacific Plaza Towers, BGC
John Paul Velasco	City Architect	City of Butuan, Agusan del Norte
Jan von Gramatzki	Senior Manager	Deloitte Consulting
Nathaniel “Dinky” von Einsiedel*	President	Alliance for Safe & Sustainable Reconstruction
Stephen Webster	Strategic Development Director	Cardno
Sylvester Wong	Design Director Planning and Urban Design	Gensler
Mingbang Wu	Masters Degree Candidate	Georgetown University Urban and Regional Planning Program
Eduardo Yap	Committee Chair	Management Association of the Philippines
Josephine Yap	President & CEO	Filinvest Land, Inc.
Ange Yapyuco	Analyst	Cushman and Wakefield Philippines
David Zaballero	Director	Arquitectonica
Jaime Augusto Zobel de Ayala	Chairman	Ayala Corporation
Dolly Anne Zoluaga	Architect	City of Iloilo

About ULI and Asia Society in the Philippines

Asia Society Philippine Foundation, Inc. (ASPF) was established on March 22, 1999 by Washington Sycip with a mission to promote understanding of Asia through education, business, leadership, policy and arts & culture. ASPF presents the uniqueness and diversity of cultures through lectures, exhibitions, films, seminars and conference. Part of a global network of 11 Asia Society centers in Asia and the United States, the Philippine Center aims to strengthen relationships, deepen understanding and bridge differences across the Philippines, Asia and the United States. ASPF is a non-profit foundation accredited by the Philippine Council for NGO certification (PCNC) and is supported by the membership contributions from foundations, institutions, corporations and individuals.

Urban Land Institute Philippines District Council started in 2011. Carlos Rufino, President of the Net Group, is the ULI Philippines Chair. The annual presentation of the Emerging Trends in Real Estate Pacific has become a regular event for ULI Philippines. In 2011 when the report was first presented, the Philippines was ranked no. 20 out of 23 regional markets in terms of investment prospects. For 2014, it climbed to the 4th spot. The ULI Young Leaders Group in the Philippines is likewise active and pursuing regular meetings with its members and network. ULI Philippines have conducted professional development courses including meeting-in-meeting programs with other major local and international business organizations. With the support of ULI Asia Pacific and ULI Headquarters, ULI Philippines has worked on the following key projects: Ten Principles of Sustainable Development for Metro Manila's New Urban Core; Clark International Airport and Special Economic Zone Report; and Typhoon Yolanda and Tacloban, Philippines: Initial Review Report.



Livable Cities Design Challenge



APEC2015
National Organizing Council
Philippines



with



with a grant provided by



About the Challenge

The Livable Cities Design Challenge is a planning and design competition whose objective is to get city planners across the Philippines to better plan their respective cities and municipalities for a climate-defined future by being more aware and better prepared for disaster-risk reduction. At the same time, city planners will be encouraged to design Livable Cities that offer safety, convenience, livelihood, lifestyle, and sustainability that attract people to live, work, and play so their cities can be competitive.

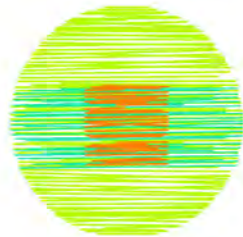
A maximum of 20 cities and municipalities will be selected to create teams and join the competition. Cities will include those hosting APEC Meetings in 2015 and others that are vulnerable or have been affected by disasters in the past. Cities or municipalities that accept the invitation will have to commit to undergo orientation and participate in planned workshops.

Phase I PCSI Forum	Phase II Mentoring	Phase III Planning and Design
Teams will attend the Pacific Cities Sustainability Initiative (PCSI) Forum to be oriented on essential principles in livable city planning and engage in a dialogue on urban planning and design with experts from around the world.	Each team will work with a team of Mentors to develop planning and design concepts for their respective cities. A team of 2 Mentors will go to their respective cities for field visits and mentoring missions through out the mentoring stage.	Competition Teams will finalize their designs for review of the judges. Teams will be submitting their conceptual designs, architectural perspectives and site plans . The winning team will be announced during the awarding.

A P O L L O

M A N A G E M E N T

BGC



Bonifacio
Global City



Lafarge is a world leader in building materials, with businesses in Cement, Aggregates and Concrete. Backed by 180 years of experience and with the world's leading building materials research facility, Lafarge is contributing to building better cities, pushing the boundaries of sustainable construction and architectural creativity.

In the Philippines, Lafarge combines its global expertise with the heritage of its local brands. The Lafarge Republic Group is reshaping the country's construction landscape – providing advanced building materials solutions under the brands REPUBLIC, FORTUNE, MINDANAO, RAPIDSET, PORTLAND DUO and WALLMASTER.

Lafarge in the Philippines has a nationwide manufacturing network of five cement plants, one grinding station, terminal and aggregates quarries that are strategically located in Luzon, Visayas and Mindanao, and operated by 1300+ skilled professionals committed to the vision of helping build green communities for a better quality of life.

BUILDING BETTER CITIES



MORE HOUSING

- Development of low cost and environmentally sustainable concrete hollow blocks
- Partnership with respected NGOs creating housing microfinance program for the 'bottom of the pyramid' segment



MORE COMPACT

- Development of high performance solutions for vertical constructions that save space and lessen urban sprawl
- High strength concrete for foundations to lightweight concrete for high rise buildings



MORE DURABLE

- More developers are aiming for their buildings to be certified "green," like the Zuellig Building, which was conferred by the US Green Building Council with their highest accolade, a Platinum certification that puts it at parity with the world's best buildings. We are well-positioned to serve the needs of this segment by offering solutions like blended cement, green roofs, and fly ash that help earn green rating points.
- Partnering with WWF to build the new Ranger Station for the protection of the Tubbataha Reefs as Corporate Sponsor of high sulfate-resistant cement, aggregates and fly ash to produce high performance concrete to withstand the harsh ocean environment



MORE CONNECTED

- We provide solutions for building better, more durable and easy-to-maintain infrastructure that make cities more connected. We are integral to the construction of roads, expressways, bridges, tunnels, seaports, airports and mass transit facilities that convey people and goods from city to city every day.
- Our cement and aggregates were used in the construction of the North Luzon Expressway, Light Rail Transit 2, International Port of Batangas, and the Subic Bay Port.



MORE BEAUTIFUL

- We create innovative solutions to contribute to more beautiful cities. Our solutions support outstanding architecture in our desire to make cities more aesthetically pleasing.
- Our Lafarge wallMASTER is an advanced masonry cement enhanced with Light Micro-Filler Technology which results in a lighter plaster and an ultra-smooth finish making it ideal for building beautiful walls.

What Makes a Sustainable City?

To stay sustainable, cities must evolve and be agile to changes. A great city brings business to invest in, lets nature thrive, celebrates cultures and keeps people engaged.

AECOM is an urban laboratory engaging collaboration among engineering and design experts worldwide.

Bringing together adept and versatile teams, we provide integrated delivery service to help cities stay resilient in this challenging environment.

For more information, contact us at AskAsia@aecom.com



At Arup, we aspire to have a positive influence on the world, so sustainability is at the heart of our work.

Arup's uncommon ability to marry technical ability, skill in project delivery and strategic advice translates corporate responsibility and sustainability plans into meaningful action. Our expertise spans carbon, water, waste and energy, economics and planning and management skills ranging from transaction advice to organisational behaviour.

That breadth enables us to realise solutions at any scale: from a rainwater harvesting flushing tank for constrained spaces to large-scale sustainable infrastructure, and the design of some of the world's greenest buildings.

From 90 offices in 38 countries our 11,000 designers, planners, engineers, consultants and technical specialists deliver innovative projects across the world with creativity and passion.

We shape a better world.

THE BCDA GROUP

One Renewed Passion to Transform a Country

A Group Reborn. We are the BCDA Group. Now, driven by a renewed passion to bring about a transformed country. Buoyed by a higher level of excellence. Catalyzed into a synergy that truly gives birth to a Group far greater than the sum of all its member-firms.

A New Dynamic. A new dynamic has been injected into the corporate bloodstream of the BCDA Group through a Masterplan that assures the forward movement of companies and projects with one goal: Harness vast landholdings and infrastructure assets spread throughout the country's economic capitals.

Beacons of Growth Centers. The BCDA Group is set to modernize the Clark International Airport in Pampanga and the San Fernando Airport in La Union. The Subic-Clark-Tarlac Expressway (SCTEX) provides vital infrastructure that will further open up trade and investment in the region.

Countrywide Development. The BCDA Group is truly a catalyst for countrywide development. Its center of socio-economic activities in seaports and airports, in freeports and economic zones—will acquire an unprecedented growth momentum heretofore unknown, to spread in every region.

Enhance People's Quality of Life. The Bonifacio Global City and the Newport City in Metro Manila manifest our mission to enhance our people's quality of life through a time-honored strategy: Invent and re-invent cities where every individual experiences "hi-touch" in a "hi-tech" world. Always, our common humanity prevails in a technology-driven century.

Bonifacio Global City

Subic-Clark-Tarlac Expressway

Clark International Airport
Clark Freeport Zone

San Fernando International Seaport
Port Freeport Zone

John Hay Special Economic Zone

Bataan Business and Leisure Park

Republic of the Philippines
Office of the President

BCDA

Bases Conversion and Development Authority
www.bcda.gov.ph

Like us on <https://www.facebook.com/TheBCDAGroup>

Follow us on <https://www.twitter.com/thebcdagroup>

THE BCDA GROUP

Global experience Local presence

Urbanization, globalization, and climate change are fundamentally changing demands on cities. From our global experience and local presence, we know that each city's opportunities and challenges are unique.

At Deloitte, we collaborate with cities to help them become more resilient, competitive, livable and sustainable. After all, that's where we all want to live.



www.deloitte.com/us/emergingmarkets

As used in this document, "Deloitte" means Deloitte LLP and its subsidiaries. Please see www.deloitte.com/us/about for a detailed description of the legal structure of Deloitte LLP and its subsidiaries. Certain services may not be available to attest clients under the rules and regulations of public accounting.

Copyright © 2014 Deloitte Development LLC. All rights reserved.
Member of Deloitte Touche Tohmatsu Limited



ENERGY FOUNDATION
building a new energy future



Barangaroo South, Sydney, Australia

CREATING POSITIVE LEGACIES

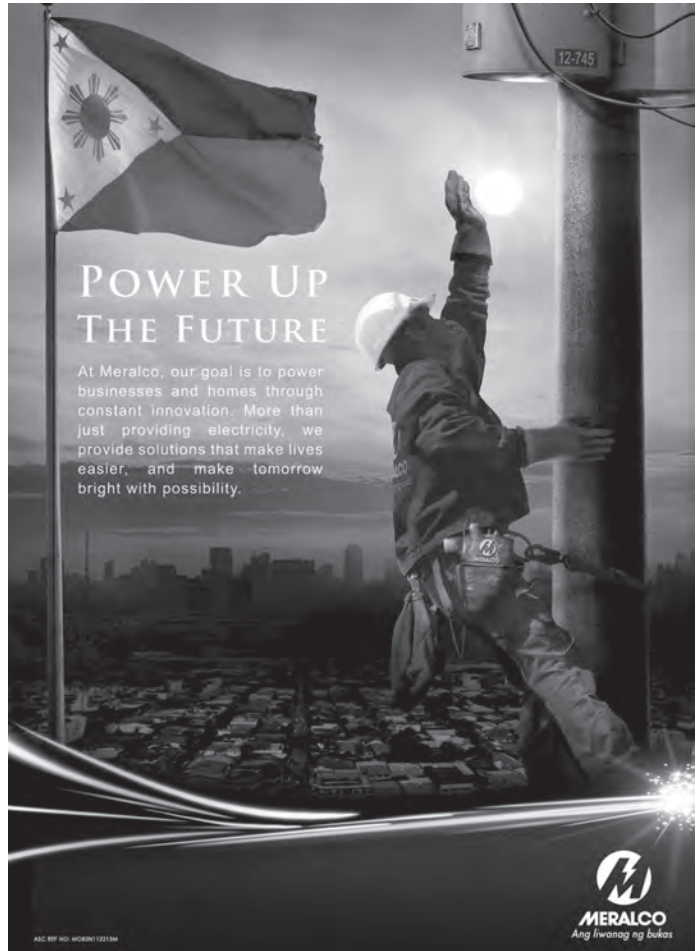
“Companies must start justifying their worth to society, with greater emphasis placed on environmental and social impact rather than straight economics.”

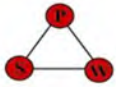
- Dick Dusseldorp, Lend Lease Founder, 1973

This founding philosophy defines the way we do business and guides us in every decision that we make. We create innovative and sustainable partnerships, delivering maximum benefits to clients, investors and communities. Sustainability is an integral part of our culture and through design and investment in new technologies we are delivering the next generation of sustainable property and infrastructure solutions.

We recognise that our projects have a lasting impact on the people and places around them. Wherever we work in the world, we strive to leave a positive legacy by creating the best places.

60 Anson Road
#17-01 Mapletree Anson
Singapore 079914
T +65 6671 6600 | F +65 6238 5301
www.lendlease.com





Pag-asa Steel Works, Inc.
FIRST IN QUALITY



CELEBRATING
50 YEARS OF EXCELLENCE

Superior
Reinforcing
Steel Bars
Available in:

PNS Grade 230 / ASTM Grade 33
PNS Grade 275 / ASTM Grade 40
PNS Grade 415 / ASTM Grade 60



CERTIFICATION
INTERNATIONAL
ISO 9001:2008
ISO 14001:2004
OHSAS 18001:2007



408 AMANG RODRIGUEZ AVE., MANGGAHAN, PASIG
TEL. 646-2196 TO 99, 646-5945 | FAX 681-4601
WWW.PAGASASTEEL.COM
SALES@PAGASASTEEL.COM

When business
works better

the world
works better

Assurance | Tax | Transactions | Advisory

SGV

Building a better
working world

6760 Ayala Avenue, Makati City,
1226 Metro Manila, Philippines
Tel: (632) 891-0307

www.ey.com/ph

A member firm of Ernst & Young Global Limited.



PLDT

SMART



Antique • Cebu • Iloilo • Leyte • Samar



We are building homes for those
affected by Typhoon Haiyan.

Local Code: Yolanda

JOIN US.

Your contribution can be made through
www.smcareshousingproject.com



This project is covered by DSWD Authority Number 2013-21 valid from November 21, 2013 to November 20, 2014.
All donations to the SM Foundation, Inc. under the Yolanda Housing Project are eligible for BIR tax credit.
Please provide BIR Certificate of Registration of the donor company.





The Asia Society
and
the Urban Land Institute
thank the sponsors of the 2nd Annual
Pacific Cities Sustainability Initiative Forum
for their invaluable support

IN PARTNERSHIP WITH

APEC2015
National Organizing Council
Philippines

and



SPONSORS

PRESENTING



BENEFACTOR



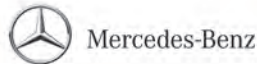
LEADER



PATRON



SUPPORTER



MEDIA PARTNER

