

From development to Restoration

- Experience of Seoul -

Feb 2013

Visiting Professor In Keun LEE, University of Seoul

Formerly Assistant Mayor, Seoul Metropolitan Government

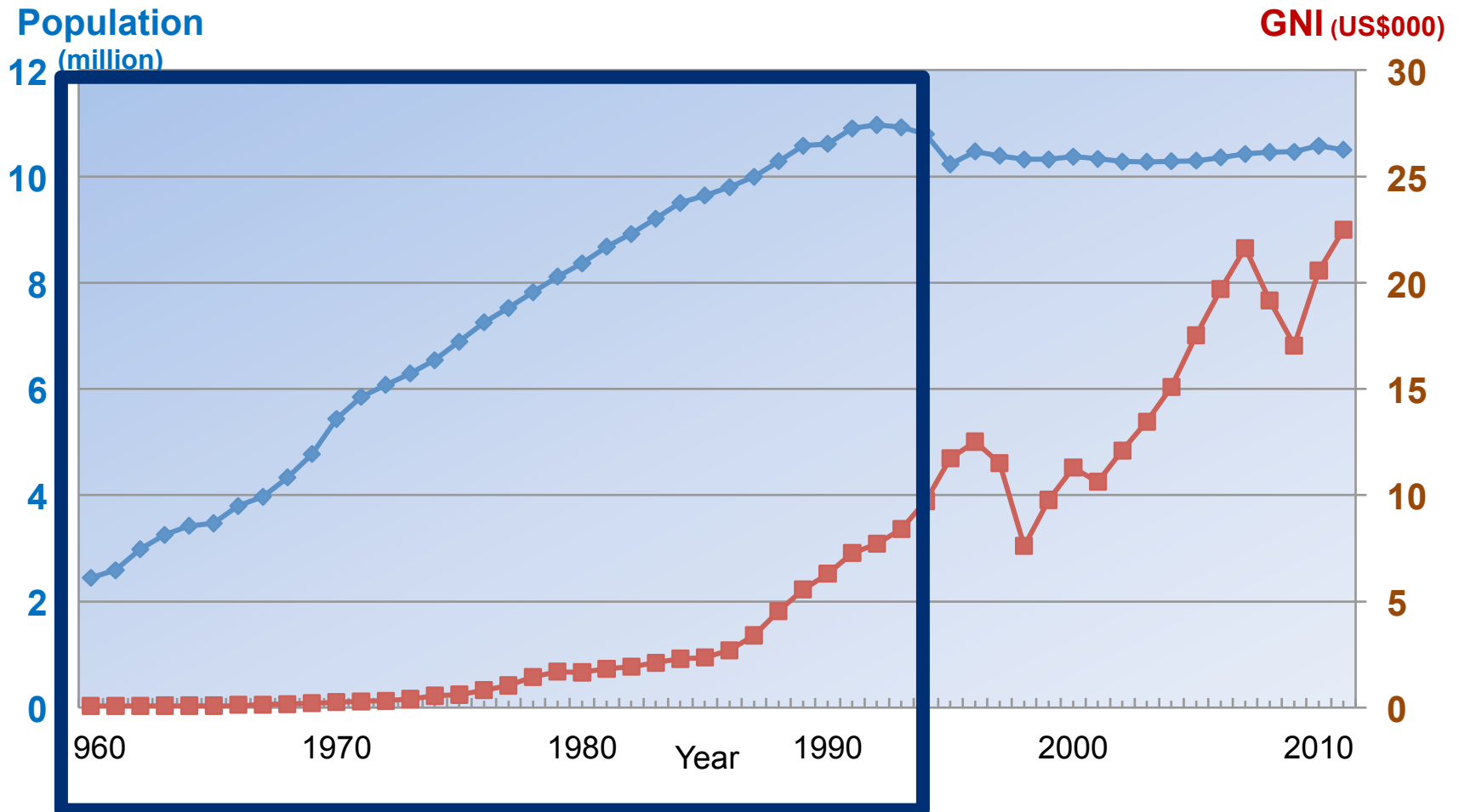
60 years ago



Now



Growth of Seoul



Road construction



Covering of Cheong Gye Cheon



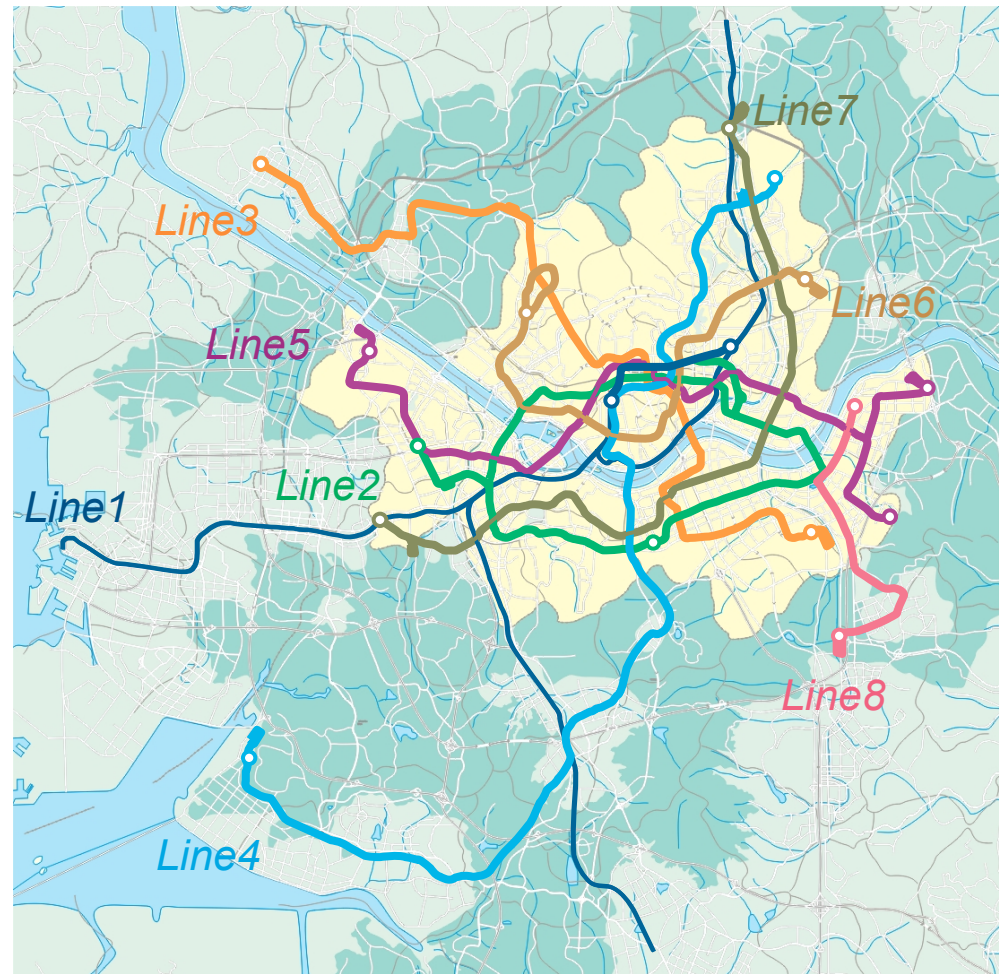
Feb 2013

I K Lee

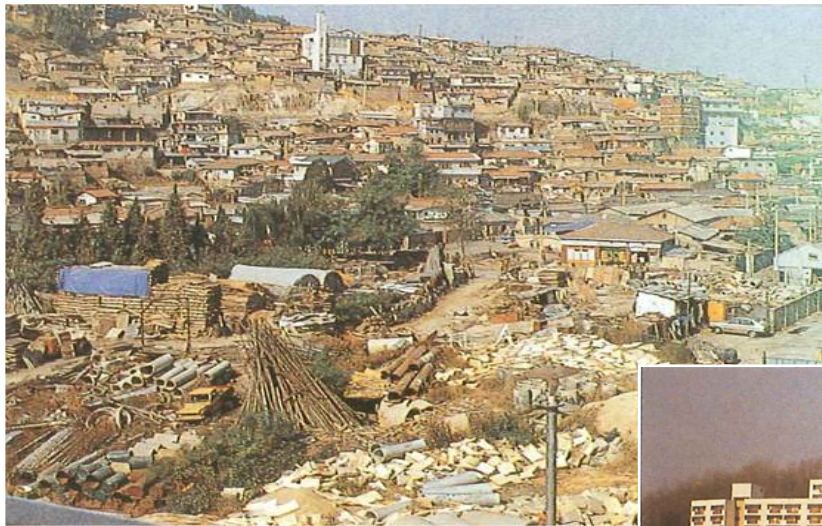
6

Subway Construction

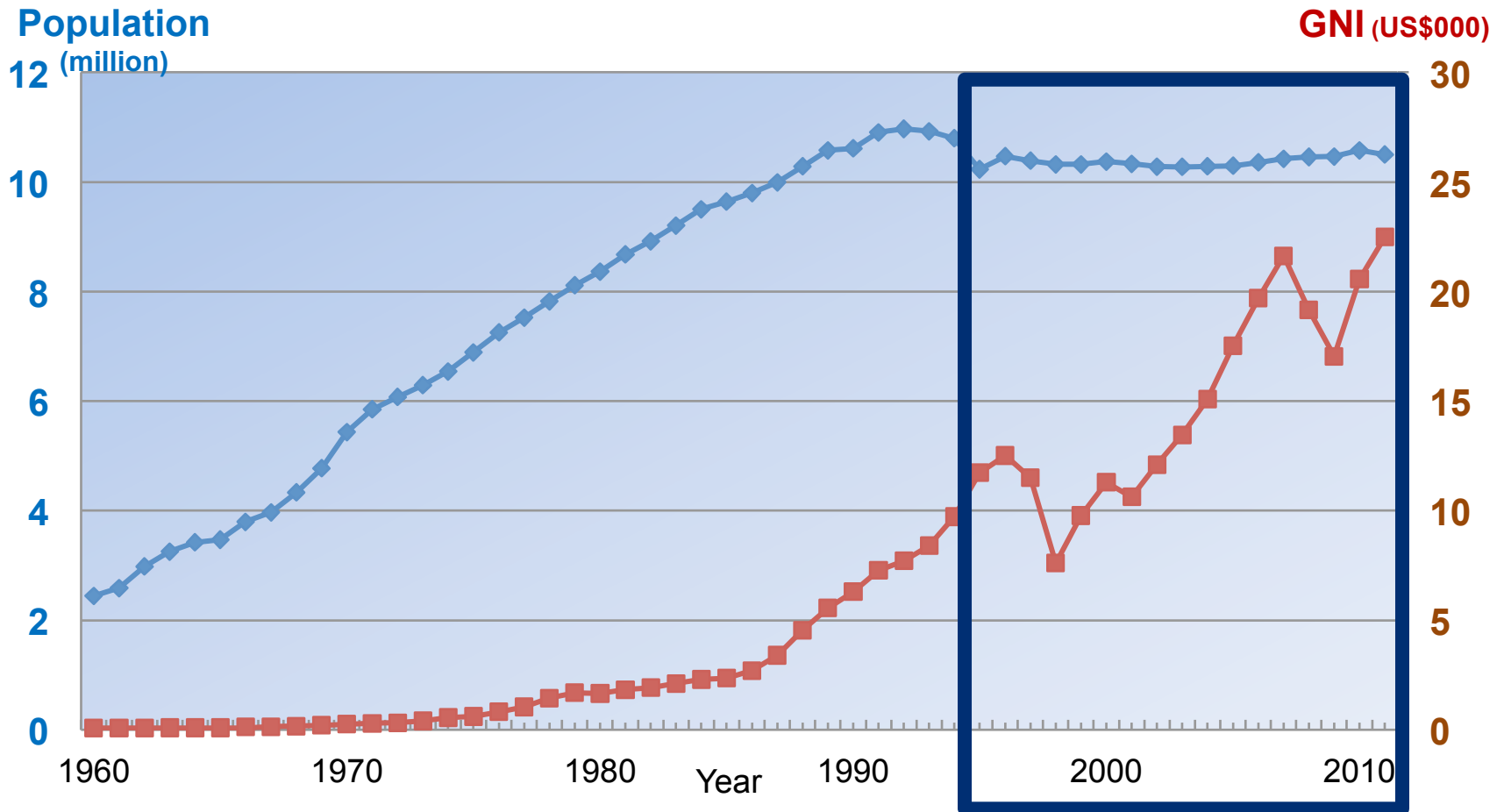
- **Eight lines: 1970~2000**
 - ✓ length 287km
 - ✓ stations 265
- **Over 7 M /day**



Housing: Apartment complex



Growth of Seoul

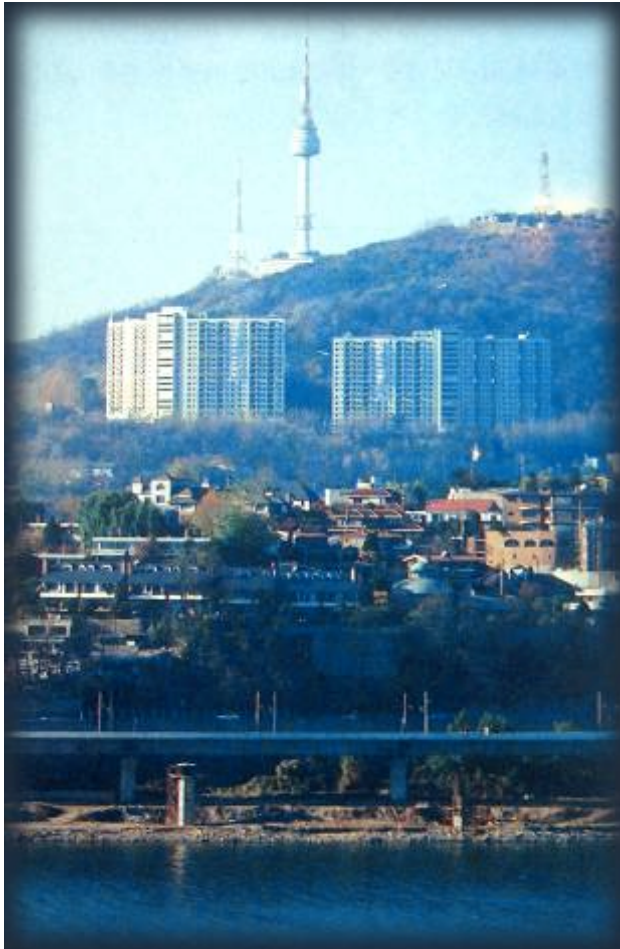


After 1995~: *Cure period*

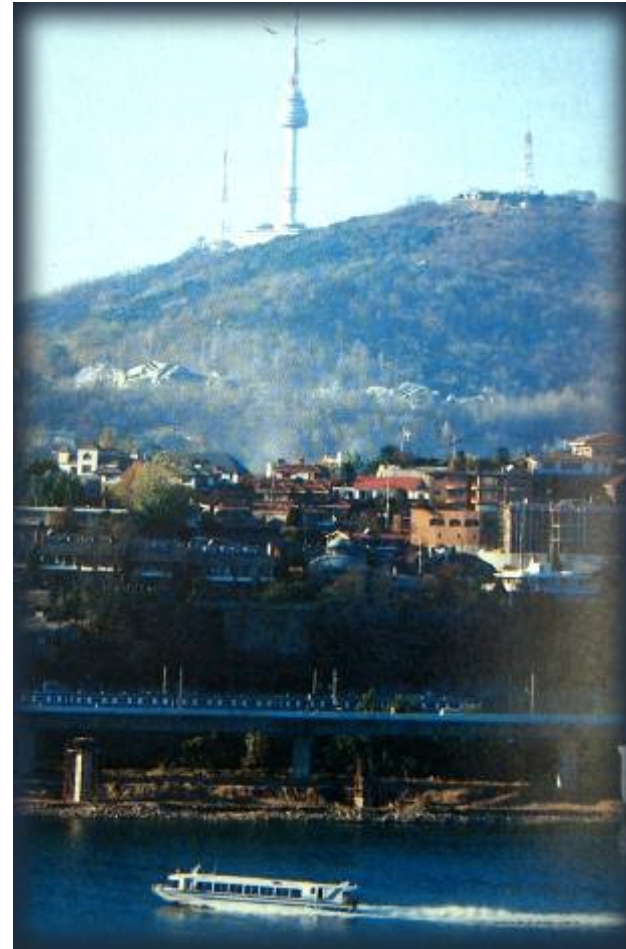
- Side effects of the explosive urbanisation
 - Over crowded, congestion, pollution
 - Quantity>quality, efficiency & growth only

- Paradigm shift from development
 - Quality of life, human-oriented & sustainable city
 - Restoration of nature, history and topology
 - From hardware to software

Demolition of Namsan Apartments (1994)

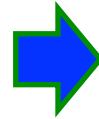


Feb 2013



I K Lee

Demolition of Colonial buildings (1995)



Gwangwhamun Square (2009)



Feb 2013

I K Lee

13

Cheong Gye Cheon Restoration (2005)



Thank you!